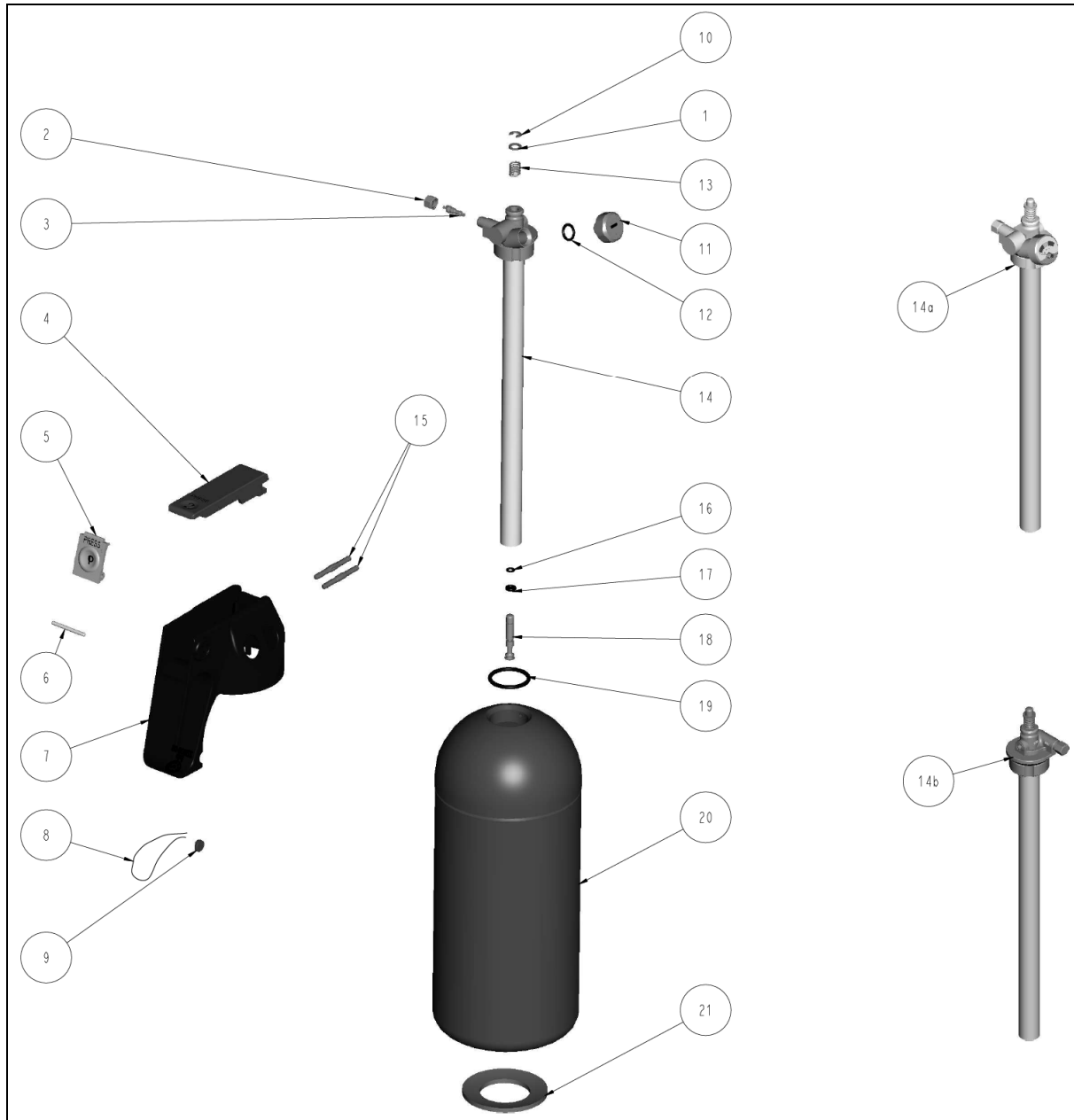




P 1 G / GM, P 2 G / GM
P 1 DB
EN 3 / CE

No.: 929152-05
 Replacement for: 929152-04
 Page: 1
 consisting of: 6
 Date: 01.03.2024



Drawing 1: Exploded view

Pos.	Part Ref.	Description
1	216650.0000	Disc
2	306880.0000	Valve cap, non nickel plated
2a	353780.0000	Valve cap, nickel plated
3	305321.0000	Test valve
4	221940.0000	Lever, red
5	121730.0000	Safety device, yellow
6	121020.0000	Cylindrical pin, black/carbon steel zinc plated
6a	149635.0000	Cylindrical pin, stainless steel



**P 1 G / GM, P 2 G / GM
P 1 DB
EN 3 / CE**

No.: 929152-05
Replacement for: 929152-04
Page: 2
consisting of: 6
Date: 01.03.2024

7	350672.0000 **	Valve housing cpl. with hole for pressure gauge pos. 4-9, with pos. 6 and red lead P2GM
7a	350487.0000 **	Valve housing cpl. without hole for pressure gauge pos. 4-9, with pos. 6 and red lead P2G
7b	351938.0000 *	Valve housing cpl. without hole for pressure gauge pos. 4-9, with pos. 6a and red lead P2GM
7c	352002.0000	Valve housing cpl. with hole for pressure gauge pos. 4-9, with pos. 6a and red lead P2GM
7d	351812.0000	Valve housing cpl. with hole for pressure gauge pos. 4-9 with pos. 6 and red lead P1DB
7e	353160.0000	Valve housing cpl. with hole for pressure gauge pos. 4-9, with pos. 6 and red lead P1GM, P1DB
8	902000.0000	Roll of lead sealing wire
9	222096.0000	Lead, red
9	222608.0000	Lead, blue
9	221985.0000	Lead, yellow
9	222607.0000	Lead, green
10	212880.0000	Safety disc
11	355667.0000	Small pressure gauge
11a	354750.0000	Small pressure gauge, nickel plated
12	222196.0000	O-ring 7,66 x 1,78 for pos. 11a
12a	222404.0000	O-ring 9,5 x 2 for pos. 11
13	221440.0000	Spring
14a	353857.0000	Valve cpl. P2GM with steel cylinder pos 1,2,3,10, 11a,12-14,16-19 (G, N) ¹
14a	351641.0030	Valve cpl. P2GM with steel cylinder pos 1,2,3,10-14,16-19 (G, N) ¹
14b	350516.0000	Valve cpl. P2G with steel cylinder pos. 1,2,3,10,13,14, 16-19 (N) ¹
14a	351641.3000	Valve cpl. (aluminium) P2GM with steel cylinder pos. 1,2a,3,10a-14, 16-19 (G,N) ¹
14a	359928.0030	Valve cpl. P1GM, P1DB with alu and steel cylinder, pos. 1,2,3,10-14, 16-19 (G,N) ¹ from Q4 2019
14a	---	Valve cpl. P1GM, P1DB pos. 1,2,3,10-14, 16-19 with aluminium cylinder (G,N) ¹ until Q4 2019
15	221828.0000	Pin 4x40
15	149634.0000	Pin 4x40, stainless steel
16	209490.0000	O-ring 3,5 x 1,5
17	121800.0000	O-ring 3 x 2,7
18	349776.0000	Valve bolt cpl. pos. 16-18
18a	356552.0000	Valve bolt cpl. pos. 16-18
19	233170.0000	O-ring 26,2 x 3 P2G/GM
19	222831.0000	O-Ring 27x2,5 (EPDM) P1GM/DB for aluminium cylinders
19	233230.0000	O-ring 27 x 3 P1GM/DB for steel cylinders from Q4 2019
20	---	Cylinder
21	150124.0000	Rubber ring Ø64mm x Ø38 mm x 3.5mm
22	148984.0000 *	Car-bracket P2G/GM with steel cylinder
22a	350482.0000 *	Car-bracket P2G/GM with steel cylinder



**P 1 G / GM, P 2 G / GM
P 1 DB
EN 3 / CE**

No.: 929152-05
Replacement for: 929152-04
Page: 3
consisting of: 6
Date: 01.03.2024

22b	148969.0000 *	Car-bracket P1GM/DB with aluminium cylinder
22c	150164.0000 *	Car-bracket P1DB with steel cylinder
23	150091.0000 *	Shell bracket P1GM/DB with steel and aluminium cylinder
24	350789.0000 *	Transport belt for pos.22 P2G/GM with steel and aluminium cylinder
24	350757.0000 *	Transport belt P1DB/GM with steel and aluminium cylinder
25	355994.0000 *	Textil tension strap
26	150179.0000 *	Reinforcing steel sheet
27	927058.0000 *	Refill ABC-Adex K – 6 kg
28	927056.0000 *	Refill ABC-Adex K – 9 kg
29	923293.0000 *	Refill ABC-Adex K – 25 kg
30	927016.0000 *	Refill ABC-Glorex – 6 kg
31	927017.0000 *	Refill ABC-Glorex – 9 kg
32	925032.0000 *	Refill ABC-Glutex K – 25 kg
33	000959.0000 *	Refill ABC-Glutex C – 25 kg

Table 1: List of spare parts

* not illustrated

** valves with suffixes .0001, .0002, .0003 means year of production with appropriate colour of safety device specified by internal country regulations.

¹ Legend for valve configuration:

G = with pressure gauge

N = with non-return valve (check valve)

PRVB = with pressure relieve valve with burst disc (type 1)

PRV = with pressure relieve valve (type 2)

1. Inspection procedure

In order to ensure the permanent readiness for operation, each extinguisher must be regularly tested by the expert, every 2 years at least (visual inspection).

It may be necessary to shorten the inspection intervals if, for example, this is specified by national regulations.

1.1 Visual inspection

Examine the general condition (cleanliness, condition of the fittings, the safety seal, the protective coating, the labelling, the bracket) and check for damages. Check plastic parts for damages (e.g. breakage, deformation, fractures, discoloration).

Extinguishers and fittings with damage resulting in a negative influence on the pressure resistance must be replaced.

1.2 Spare parts

Performance and technical characteristics required for approval and fire protection must be ensured. Therefore only original refills and replacement parts that have been certified should be used. Also the technical data such as torques, or replacement intervals must be strictly observed. Extinguishers or parts which not more meet the safety-related or functional requirements have to be exchanged.

1.3 Cylinder

1.3.1 Remove valve housing (pos. 7) by pushing back the 2 grooved pins (pos. 15).



P 1 G / GM, P 2 G / GM
P 1 DB
EN 3 / CE

No.: 929152-05
Replacement for: 929152-04
Page: 4
consisting of: 6
Date: 01.03.2024

- 1.3.2 **ATTENTION!** Extinguisher is under pressure. Therefore loosen the tilt check valve core or the valve body by 1 to 2 turns. Pressure will then escape at the non-return valve or through the pressure relieve grooves at the valve body.
- 1.3.3 Check the outside condition of the cylinder by visual inspection. If corrosion or dent is visible, the cylinder must be replaced. The thread ring must be clean and checked. Remove the damaged cylinder.
- 1.3.4 Empty cylinder and clean internally using nitrogen. In case of damages resulting in a negative influence on the pressure resistance, dispose of cylinder (check threads and interior of the cylinder for damages by visual inspection).
- 1.3.5 New extinguishing powder may have to be filled in after inspection, please note the durability.
- 1.3.6 Replace damaged labels with respective stickers.
- 1.3.7 Lubricate evenly the complete thread of the cylinder with anticorrosive grease.
- 1.4 Valve**
- 1.4.1 Clean dip tube and check for blockage.
- 1.4.2 Clean valve body including valve bolt thoroughly. Polish surfaces for valve bolt and check for damages. Replace damaged parts.
Dispose of valves with interior / exterior damages influencing their stability or damaged threads.
- 1.4.3 Lubricate the shaft of the valve bolt with anticorrosive grease (0,1g up to 0,15g Vaseline) and check whether it is smooth running.
- 1.4.4 The „O“-ring that seals the valve and the body has to be replaced after every opening of the fire extinguisher. It is recommended to replace all “o”-rings. In any case, “o”-rings with signs of damage, porosity or deformation must be replaced. Replace damaged valve bolt.
- 1.4.5 Mount cpl. valve and check its functioning (the spring moves the valve bolt back into it's original position).
- 1.5 Assembly**
- 1.5.1 Mount valve cpl. and screw the valve into the recharged cylinder. Before screwing lubricate evenly the thread of the valve / “o”-ring with 0,3g up to 0,5g anticorrosive grease.
- 1.5.2 Put on operating overpressure of 15 bar, permissible variation ± 0.5 bar at 20°C; check with pressure tester. Use only dry nitrogen with a minimum dew point of minus 40°C.
- 1.5.3 Use leak detection agent to check the cylinder (spray the leak detection agent on the connection between cylinder and valve and the valve has to be checked. Wait 5 minutes, then it must be removed by compressed air due to the risk of freezing).
- 1.5.4 Put on the seal. Put on valve casing and fix with 2 pins.
- 1.5.5 The date of filling, inspection, powder refill, the name of the inspector as well as name and address of his employer are to be indicated in a legible manner on a sticker or other label that is fixed on the extinguisher. The label may not be covered, not even partially.



2. Refilling the extinguisher

- 2.1 Recharging the extinguisher is identical to the inspection, except that a new extinguishing powder must be removed and it must be checked competently for possible reuse.
- 2.2 Different extinguishing powders must not be mixed.
- 2.3 For refilling the extinguisher only use the extinguishing powder indicated on the label.
- 2.4 After maintenance, it is recommended to transport the extinguisher in an upright position to its final location in order to avoid any damages during transport without packaging.

2.4 Extinguisher	Recharge quantity
P2G/GM	2000 g \pm 3 % (60g)
P1G/GM, P1DB	1000 g \pm 3 % (50g)

use calibrated scales

3. Tightening torques

Valve cpl. to steel cylinder	30 Nm to 45 Nm
Valve cpl. to aluminum cylinder	25 Nm to 35 Nm
Valve (aluminium) to steel and aluminium cylinder	25 Nm to 30 Nm
Test valve	0,15 Nm to 0,25 Nm
Valve cap	1 Nm to 1,75 Nm
Pressure gauge with o-ring	max 5 Nm

4. Auxiliary material and tools for servicing

"The following tool list is without reference to the process description. The listed tools are to be used appropriately".

Part Ref.	Description
920374.1000	Key for valve body
920505.0000	Assembly device for valve pin
908370.0000	Polished rod
911200.0000	Polisher body
900600.0000	Pressure gauge control 0-25 bar
901300.0000	Key for safety valve
924833.0000	Compressed air gun with clutch for test connection
919980.0000	Clamping for fire extinguishers
902040.0000	Pressure reducer for nitrogen Din 8546
920429.0000	Torque wrench 20-150 Nm 9x12 "



P 1 G / GM, P 2 G / GM
P 1 DB
EN 3 / CE

No.: 929152-05
Replacement for: 929152-04
Page: 6
consisting of: 6
Date: 01.03.2024

Revision Description

Date	Revision		Summary and Reasons for Changes	Created By
	Before	After		
01.07.2016	-	-	Maintenance instruction issuance.	-
-	00	01	Update	-
-	01	02	Update	-
08.10.2019	02	03	Update	-
17.01.2024	03	04	The artwork update: P1G/GM, P1DB added, note about valves combination (**) added, tightening torque changed: aluminium valve, steel and aluminum cylinder added	Patrycja Pociask
01.03.2024	04	05	Exploded view updated	Patrycja Pociask